



News and Highlights

3rd Quarter 2024

www.co.beltrami.mn.us

Beltrami County Mission and Values: We will strive to be the catalyst to firmly establish a community that promotes healthy families, environmental quality, expanding economic opportunity and a quality of life second to none.

Beltrami County’s Reset Program Receives National Award

The NACo (National Association of Counties) awarded Beltrami County a National Achievement Award for the County’s Reset Program.

The Reset Program is a collaboration between the Human Services, Criminal Justice, and Public Safety systems. The Reset program consists of a Case Manager who engages with current inmates as they prepare to exit the Beltrami County Jail, who are interested in a “reset”. The individuals in the voluntary program receive an orientation to program services, assessments, and a personalized case plan. The case plan will be person specific, identifying needs that may include things such as employment, medical assistance, housing, chemical and mental health needs, connections with natural supports as well as a variety of other services.

The case manager works with the person to reduce barriers to services and then assists them in meeting the needs outlined in the case plan. It is expected that the case manager may work with the exiting inmate for up to six months following their release from jail. If further services are needed, a referral would be made to other programs that can continue working on the identified needs of the individual.

Reset Social Worker Amanda Sachau said, “I am making community connections. I am working hard at helping people maintain sobriety through those connections, gaining productive citizens through employment, reuniting moms and dads with their children, helping navigate the unknown, being that listening ear for someone that needs to be heard, and helping break the vicious cycles that I’ve seen that have lasted for years.”

Sachau further said, “The Reset Program is reducing recidivism and changing lives for the better... one of my long-term clients has been sober now for two years, reunited with her daughter, living here in Bemidji, driving, and has a job. There are many good stories I could tell.”



(Photo: Beltrami County Board Chair John Carlson presents Reset Social Worker Amanda Sachau with the National Association of Counties (NACo) National Achievement Award for the Reset Program. Pictured left to right: Commissioner John Carlson, Reset Social Worker Amanda Sachau, Commissioner Richard Anderson, Commissioner Tim Sumner, Commissioner Joe Gould, Sheriff Jason Riggs, Commissioner Craig Gaasvig and Health & Human Services Director Anne Lindseth.)

~Submitted by: Emergency Management Director/PIO,
Christopher Muller



September is National Preparedness Month



Ready.gov

An official website of the U.S. Department of Homeland Security

Beltrami County Emergency Management and Public Health Emergency Preparedness are encouraging families to review your emergency plans and emergency supply kits. It is recommended that families have supplies for each member of your family for 72 hours, including water, non-perishable food items, flashlights, cell phone/chargers, cash, pet supplies, a radio, first aid kit and a list of important phone numbers.

Why Chip Seal a Brand New Road

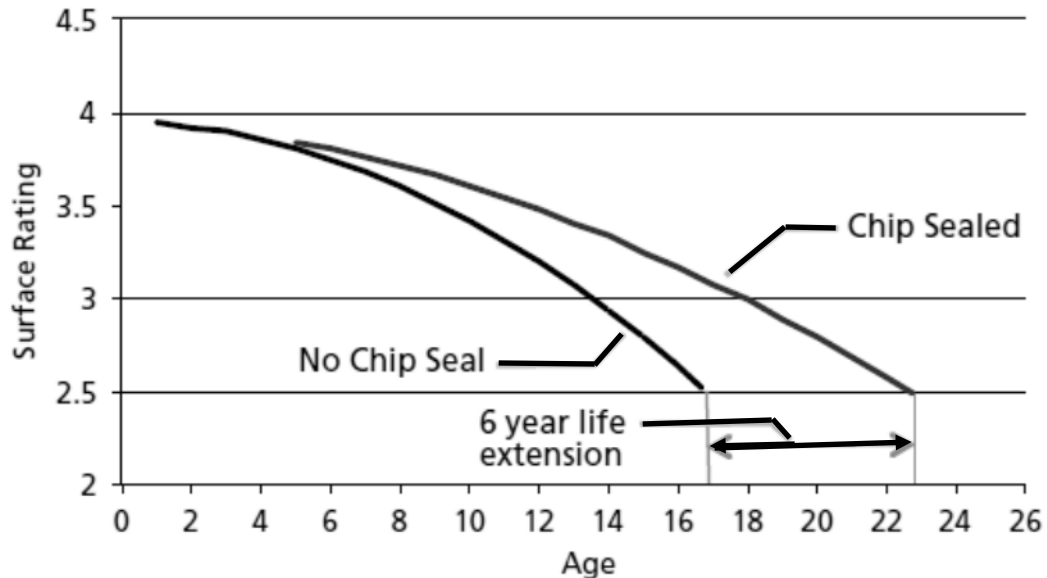
The Highway Department will commonly get asked why we're chip sealing a brand new road - it's a perfectly good road there's nothing wrong with it. Well, that's exactly the reason – treating roads early helps us keep them in good condition.

Chip sealing is a process where liquid asphalt is applied to the road surface with a layer of rock chips spread evenly and embedded into it. We usually apply a fog seal, more liquid asphalt, over the top to help keep the rocks in place. Once applied, the chip seal provides a moisture barrier and prevents deterioration of the asphalt surface from the effects of aging and oxidation due to water and sun. It is very similar to putting shingles on your roof to protect your house underneath.

By chip sealing, the County is able to extend the life of our roads in the most affordable way. Chip sealing costs about \$40,000 per mile and research has shown it extends the life of the pavement 6-10 years, providing 1 year of life for about \$5,000. A traditional 2" asphalt overlay costs about \$225,000 per mile and provides 15-20 years of pavement life, providing 1 year of life for about \$14,000.

Beltrami County uses chip seals as a cost-effective way to maintain its paved roads, stretching limited funding, and keeping our good roads in good shape.

~Submitted by: Highway Engineer, Bruce Hasbargen



2024 Road Construction Projects Update

Approximately \$10 million in construction projects were completed this past summer on County roads. With the mild winter, the two bridge replacement projects on County State Aid Highway (CSAH) 22 (Turtle River Lake Road) were able to start and be completed sooner than planned. Our paving projects were also completed ahead of schedule. The multiple paving projects were combined under one contract, which contributed to lower costs for the County. The 24 miles of paving was on CSAH 57 (Sandpiper Rd, Bittern Rd, and Island View Dr), CSAH 6 (15th St NW), CSAH 21 (Bemidji Rd), CSAH 8 (Roosevelt Rd), CR 401 (Monroe Ave), and CR 407 (Sunnyside Rd). 48 miles of chip seals were also completed across the County. The last remaining project is an erosion repair at the bridge on CSAH 12 over the Mississippi River.

With the summer's construction projects mostly completed we have started to look ahead to next year's projects. Major projects will include bituminous overlay or resurfacing on CSAH 7 (Becida Rd), CSAH 27 (Parkers Lake Rd), CSAH 29 (Gull Lake Loop Rd), CSAH 31 (Hines Rd), CSAH 43 (Knappen Hill Rd), CSAH 3 (Clearline Rd) and CSAH 15 (Irvine Ave). The reconstruction of CSAH 20 (Birchmont Beach Rd), from Bemidji Ave to the State Park entrance, is also under development.

For more information on any of these projects please contact the Beltrami County Highway Department at (218) 333-8173.

Drone Technology Assisting in Emergency Responses

On July 17, Beltrami County Deputies were dispatched for a welfare check/water rescue of an individual in a canoe in a bog area of the Mississippi River near Manomin (Rice) Lake in southwestern Beltrami County. The canoeist had become stuck in the bog, among tall reeds and cattails. This prevented deputies from being able to see the canoe from land and would have been impossible for others on the water to see them.

As other rescue resources were being requested, a Beltrami County Deputy deployed a department issued drone to search the area to locate the precise location of the canoeist. Upon locating the canoeist, he waved in acknowledgment he could see the drone. It was learned the canoeist was a tourist from Germany and rented the canoe. The party that rented out the canoe arrived on scene and was provided the location of the stranded canoeist. They used another small vessel and responded to assist the stranded canoeist.

With assistance from the drone to navigate them through the thick aquatic vegetation back to the landing, both parties safely made it back to shore a little over two hours after the initial call. The canoeist said he was very relieved once he first saw the drone flying above him. Additional resources from local fire departments and the Department of Natural Resources were able to be cancelled.

Drones have been used for a number of rescues and missions that have assisted in expediting recovery of missing persons and giving an aerial view of an incident. Drones were used last winter to assess open water on Upper Red Lake, providing a picture of the dangerous ice conditions. The Sheriff's Office drone program has also supported Emergency Management in conducting damage assessments from the air. Drones have the capability to save resources and from putting personnel in potentially dangerous areas.

~ Submitted by: Emergency Management Director, Christopher Muller



Clip and Mail

Your opinion and feedback is important to us... tell us how you feel and return this clip to:

Beltrami County Administration
701 Minnesota Ave NW
Bemidji, MN 56601

OR e-mail to: webmaster@co.beltrami.mn.us

1. Did you find the information in this Newsletter helpful?

2. What would you like to see in future issues of the Beltrami County News and Highlights?

3. A question I have of the County Board is:

4. A suggestion I have for the County Board is:



Welcome Alec Wilcox, Aquatic Invasive Species Lake Technician

Hello, I'm Alec Wilcox, the new Aquatic Invasive Species Lake Technician for Beltrami County!

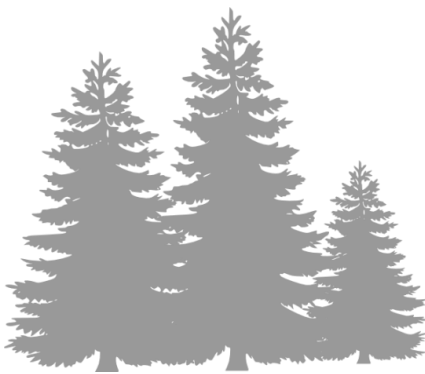
Growing up in Northern Minnesota, I spent my time exploring lakes, rivers, and forests, fascinated by the diversity of our landscapes. From native prairies to bog-stained Canadian Shield, and everything in between, I developed a passion for protecting our unique natural resources. I graduated from Bemidji State University with a focus on Wildlife Biology, Wetlands Ecology, and Geographic Information Systems (GIS). After graduation, I worked at Voyageurs National Park, where I conducted field research on aquatic ecosystems, including fisheries management, water quality monitoring, harmful algae, and aquatic invasive species (AIS). I also spent time in the Red River Valley monitoring pollutant loads and teaching watershed education.

I'm now back in Bemidji, where I've taken on the role of AIS Lake Technician. My primary responsibilities include coordinating Beltrami County's watercraft inspection program, monitoring lakes for AIS, developing and implementing an early detection and rapid response plan, and coordinating efforts with government agencies and stakeholders. During the winter months, I'll be focusing on the KEEP IT CLEAN program, which aims to keep our lakes free of garbage and human waste.

If you have any concerns or questions about AIS or the KEEP IT CLEAN program, please reach out to me via email or phone: Alec.Wilcox@co.beltrami.mn.us or (218) 333-8281.



Welcome Shane Foley, Director of Natural Resource Management



Hello, I'm Shane Foley, Beltrami County's new Director of Natural Resources Management.

As an avid outdoorsman, the opportunity for me to help manage public land in Beltrami County is a dream come true. I hunt, fish, camp, hike, ski, pick berries, all of it on public land. I personally know and appreciate the value public land brings to our families and community. I grew up in Little Falls, Minnesota and first moved to Bemidji to attend Bemidji State University where I received a Bachelor's Degree in Biology. From there I moved to Arkansas where I completed a Master's Degree in Forest Resources studying how soil fertility affects forest productivity.

I have held positions in both the public and private sector but most recently I have been an Environmental Resource Specialist here at Beltrami County for 8 years. I have been married to my wife Kaye for almost 20 years and we have three kids; Gracen, Sawyer, and Hudson. My number one priority in this position is to manage Beltrami County's natural resources in a way that provides an economic boost to the county budget while also assuring the land will remain productive, accessible, and beautiful for our future generations.



Beltrami County Public Health

MN State Opioid Funding Update

Strategy, stewardship, and collaboration summarize the conversations taking place at the Beltrami County Opioid Steering Committee meetings. Although meeting minutes, presentations, and resources are available on the Beltrami County website, as your State appointed Chief Strategist, it is essential we are transparent.

- Fund balance as of July 31 was \$646,253.49.
- Yearly budget \$140,000.00
- Annual Municipalities Meeting will be held in October, following the October 20 County Board meeting.
 - ◇ Municipalities will receive personal invites via mail.
 - ◇ This meeting will be open to the public.
 - ◇ This meeting will provide community members and municipalities with an opportunity to provide input on proposed uses of the Opioid Settlement Funds.
 - ◇ This meeting will be streamed and posted on the Steering Committee's website.

- Release, "Request for Proposals" (RFP) in January 2025
- Information can be found on the County website at: <https://www.co.beltrami.mn.us/services/public-health/>

We are grateful for the opportunity to serve our county,

Amy Bowles, RN, BSN, MSN, PHN
Public Health Division Director and Community Health Board Administrator
MN State Opioid Funds, Beltrami County Chief Strategist



Summer Weather Impacts around the County

As severe weather season wanes, Beltrami County experienced several impactful weather events over the summer. Several severe thunderstorms impacted the county resulting in damage. The most significant hit southern Beltrami County on the afternoon of July 31. Winds estimated at over 70 miles per hour whipped through Bemidji. Hundreds of trees were downed as well as power lines, resulting in widespread power outages and fires. Several vehicles were struck by falling trees. Despite the widespread damage, no injuries were reported. That could have been different.

Campers and visitors to the Lake Bemidji State Park were alerted to the incoming storm by their outdoor warning siren. Minutes before the winds hit, campers evacuated tents and sought shelter in the bathrooms and visitor center. Once the rain stopped, it was discovered a large tree had fallen on an empty tent. Beltrami County has an agreement that the Beltrami County Emergency Communications Center activates the siren for severe thunderstorms and when dangerous weather is expected.

Damaging winds weren't the only weather impacts this summer. The county experienced many hailstorms, the largest being just under three inches in diameter. The heavy spring and early summer rains erased the prolonged drought and some areas started to experience flooding. Benville Township in northwestern Beltrami County experienced a flash flood late in July, washing out several county and township roads. Almost like drought whiplash, the region hasn't seen as much precipitation and is now on the U.S. Drought Monitor as abnormally dry.

Emergency Management continues to work with our local governments through the recovery process. Several counties in Minnesota have experienced a disaster, working with FEMA and the state to secure disaster reimbursement assistance. On August 20, Beltrami County joined those counties and declared a local emergency for the response efforts to the July 31 storm.



~Submitted by: Emergency Management Director, Christopher Muller



Mobile Education Unit/Fish House

Keep an eye out for our Keep It Clean Fish House out and about at community events and educational events. If you have any questions about how you can volunteer or events that you would like to see the Keep It Clean Fish House at, please reach out to Alec Wilcox at 218-333-8281 or email alec.wilcox@co.beltrami.mn.us



Supplemental Nutrition Assistance Program (SNAP)

Education and Training (E&T)

The Supplement Nutrition Assistance Program (SNAP), formerly known as Food Stamps, helps Minnesotans with low incomes (including temporary low incomes) get the food they need for nutritious and well-balanced meals. Beltrami County Health and Human Services(HHS) determines eligibility for SNAP and also offers an employment and training portion of programming. This programming assists adults who are not working and able to work to securing employment. This assists individuals to both, meet SNAP program requirements and work toward self sufficiency.

The Beltrami County Workforce Impact Program offers employment services to SNAP program participants on a voluntary basis. County residents must choose to participate in the SNAP Education and Training Program knowingly. A portion of SNAP recipients may be subject to work and time limit provisions. These individuals must work or participate in work activities for at least 80 hours per month to maintain their benefits beyond the initial three counted months of a 36 month period.

The SNAP E&T Program is designed to provide Minnesotans with low incomes a clear pathway in developing marketable and in-demand skills, leading to career advancement and self-sufficiency. It does this through participation in job searches, training, education, or work activities.

SNAP E&T supports career and technical education activities that are intended to provide a direct link to employment. Career or technical educa-

tion programs or other vocational training are organized activities at the post-secondary level that provide individuals with the academic and technical knowledge and skills necessary to prepare for further education and careers in current or emerging employment sectors.

Beltrami County Workforce Impact focuses on Job Search Training, Career Planning, Financial and continued support. Some of the supports that can be offered include covering expenses for job interview clothing, transportation assistance, test fees, union dues and some tuition fees and required tools for specific jobs. This program meets people where they are to determine the best way to move toward employment. An individualized plan is created to identify steps needed to move forward to employment and can include things such as support with securing child care and transportation.

SNAP Employment and Training is also offered through the Northwest Indian Community Development Center and SNAP applicants have a choice in who they choose as a provider of this service.

For more information, please stop by the 2nd floor of the Community Service Building at 616 America Ave NW and request to speak to one of our Careerforce Navigators, you can also call 218-333-8300 and press option 8.

*~Submitted by: Curt Anderson, Economic Assistance Division Director
Beltrami County Health and Human Services*

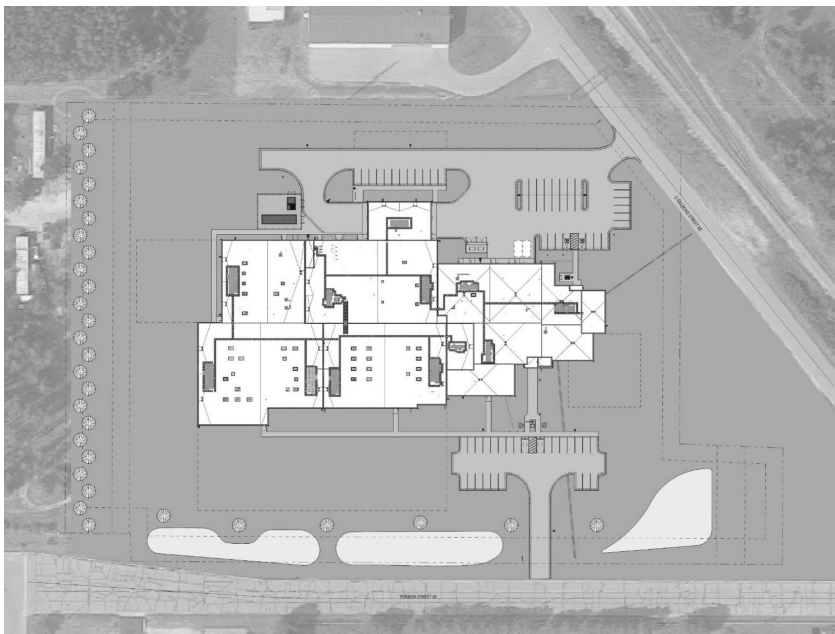
What's Happening with the New Jail?

We get that question a lot. Over the past several months staff and consultants have been working on finalizing the design of the new Jail. Adjustments were made to site plans and architectural drawings to modify the housing, administrative and booking areas, improve ingress and egress and staff parking, incorporate an integrated maintenance area (which saved hundreds of thousands of dollars), and allow for improved future expansion potential. The drawings were finalized and submitted to the City of Bemidji and the State of Minnesota for review in August. The State plan review process is estimated to take 5-6 months. The City's review will take less time.

Also in August, the County and construction manager (Kraus Anderson) issued a request for prequalification from contractors. Because the project is so large and complex, we want to ensure we have the right expertise and experience on the job. In early September, firms will be notified of their qualification status. Bidding for the project will begin in mid-September and last a month after which contracts will be drawn up and orders will be placed on long-lead items.

Although work is officially contemplated to begin in April 2025, an official Groundbreaking Ceremony has been scheduled for September 25th at noon at the site which is located at 815 Pioneer St SE. The project is slated to take between 22 and 24 months to construct which puts the opening of the new facility near the Spring of 2027.

~Submitted by: County Administrator, Tom Barry



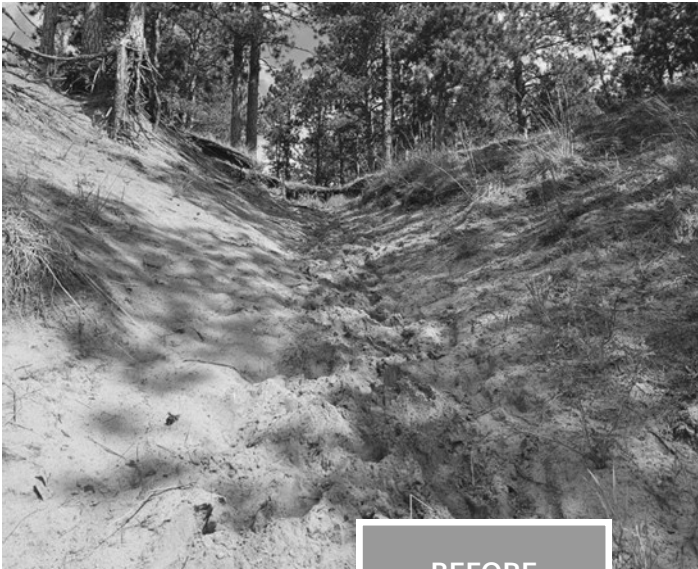
Ceremonial Jail Groundbreaking

Planning and design of the new Beltrami County jail is nearing completion with construction scheduled to begin Spring of 2025. A ceremonial groundbreaking and land blessing is scheduled for Wednesday, September 25, 2024 at noon (12:00pm). The new facility will be located at 815 Pioneer Street SE on the north side of the Bemidji Industrial Park.

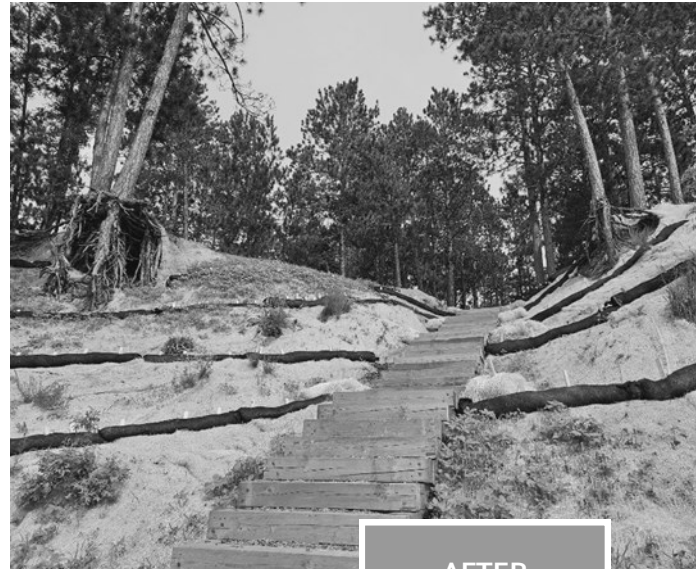
A Busy Summer for County Parks

2024 has been a busy summer for projects in the Beltrami County Park System.

- One of the last major projects associated with a Neilson Foundation grant was to install a bike workstation near the shelter at Movil Maze. A concrete pad was poured, and the bike workstation is set to be installed any day now (if it hasn't been already). A special thanks to Tom Daman and Mike Brambrink for working on that installation.
- With several wind storms this summer, the ski and snowmobile clubs have had a lot of work to do to get the trails cleared before the winter season. The Bemidji Area Cross Country Ski Club and the North Country Snowmobile Club maintain the ski and snowmobile trails at Movil Maze and Three Island Park.
- Funding was received to repair erosion at the Mississippi High Banks campsite. Over many years, the sandy bank has become unstable and eroded into the river. This summer with the heavy rains, more of the upper bank collapsed down the hill. A set of stairs, bank stabilization, vegetation, and water diversion measures were installed in June.



BEFORE



AFTER

- In 2023, the Natural Resource Management Department was awarded an American Rescue Plan grant to replace the aging restroom infrastructure within the County Parks. With the grant, we are replacing three wooden restrooms buildings with new concrete systems. Installation of new single stalled restrooms will be at Movil Maze and the north and south trailhead at Three Island Park. Delivery is expected in May 2025.

A big Shout out goes to all the volunteers and recreational clubs for all the work they do in the County Park System. Without their assistance, the parks would not be what they are! THANK YOU!

~Submitted by: Recreation Resource Manager, Lori Clark

Dry Fire Hydrants

In rural areas of Beltrami County, there are devices installed at certain locations that support fire fighting operations and you may not have even noticed them. The devices are called dry fire hydrants and are installed near sources of water that are accessible by roadways. Typical fire hydrants are charged from a municipal water supply, where dry fire hydrants are piping that go in the water.

Dry hydrants improve fire fighting response time as fire trucks can connect and pump water at these sites versus having to drive back to the fire station or to a regular fire hydrant. Dry hydrants are frequently located at bridges or boat landings. Treat them like a fire hydrant and do not block them. Be mindful when driving around them and never tamper with hydrants. In addition to reducing fire response time. They are also helpful in reducing insurance rates.



2024 General Election

The 2024 General Election takes place on Tuesday, November 5, 2024. Early in-person voting begins September 20, 2024. Beltrami County voters may early vote until November 4, 2024 at the Auditor-Treasurer's Office located at 701 Minnesota Ave NW, Suite 220, Bemidji from 8:00am-4:30pm. To find your polling location and additional information on the election, visit the Minnesota Secretary of State's website: www.sos.state.mn.us.

Voters can also request an absentee ballot by email: elections@co.beltrami.mn.us or phone 218-333-8448.

Section Corner Remonumentation

What it is and What it is not

Recently we've received some questions about the process of restoring and preserving (or "remonumenting") Public Land Survey (PLS) corners and the impact that it has in our communities. We wanted to take this opportunity to share some helpful information.

The United States Public Land Survey System (PLSS) is the system that divides land into a grid of townships and sections. When these townships and sections were originally laid out, wood posts were typically set to define the boundaries. These wood posts (PLS corner markers or "monuments") thereafter were intended to control the location of the parcels and land descriptions within the sections. The purpose of corner remonumentation is to perpetuate or reestablish the original PLS corner markers in their original locations and then preserve those locations by documenting what was done. In Beltrami County, some corner locations have been revisited by land surveyors many times over the last 150 years and the positions of the monuments have been well-preserved and documented. Other corner locations have no evidence that any land surveyor has been there since the original monument was placed. When that happens, it's unlikely that a land surveyor today will find a 150-year-old piece of wood sticking out of the ground. If they're unable to locate any reliable evidence of an original monument or bearing trees or other reference ties, the land surveyor needs to make some decisions about how best to reestablish the corner position. In many cases, this is done by a combination of historical research, reading the original land surveyor's field notes, looking at old aerial photographs, measuring from other known corner positions, examining existing lines of occupation like fences, edges of fields, or tree lines, and talking to landowners who may have multiple generations of knowledge and information about property lines in the area. In short, it's a painstaking process for a land surveyor to reestablish a missing or unmarked corner position.

By now you're probably familiar with today's geographic information system (GIS) maps that depict a representation of parcel lines. One thing that land surveyors *don't* do is use a GIS map to determine where to position a section corner. It might be easy to assume that all a land surveyor needs to do these days is use a map and some GPS coordinates to tell them where to place a corner marker, but that's absolutely not the case. The fundamental concepts of land surveying have remained unchanged even with the existence of computers and GPS equipment.

Minnesota Statutes Chapter 381, specifically Section 381.12, governs the process by which corner perpetuation, or remonumentation, is to be done. No part of this process is intended to move anyone's property lines or cause anyone to lose or gain land. Look at it this way: if the system had

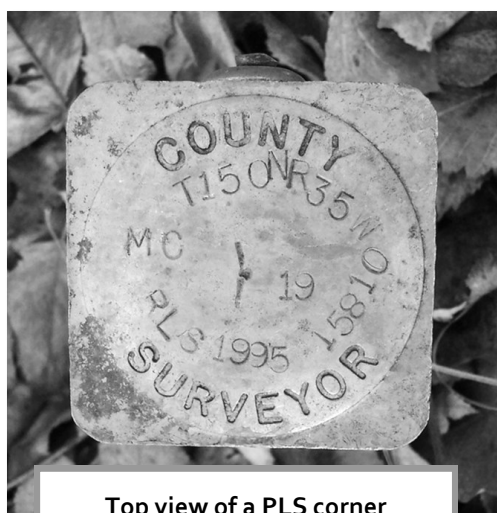
never deteriorated and the location of every original corner marker had been perfectly preserved, and proper measurements were always made precisely from those locations as land was bought and sold and divided into smaller tracts over the years, it stands to reason that there would be virtually no property line issues today. We know this was the original intent of the system. However, the reality is that the system *did* deteriorate. Many property lines have never been surveyed, and there can be many reasons why a long-established understanding about the location of a property line might be inconsistent with the restored PLS corner locations. Most of the time, property lines have been determined in good faith. So even if there's a discrepancy, a land surveyor can usually work with landowners to help resolve the matter without heated disputes and expensive legal battles.

In Beltrami County, more than 4,500 PLS corners have been remonumented and/or recertified in the last 20 years, and we know of only a small number of property line discrepancies that became known after corner remonumentation work. It may *seem* like remonumentation is what's causing the issues, but that's not the case. Technically, those discrepancies always existed. They just weren't obvious. The remonumentation work arguably helps provide a better resolution for most of those issues.

The benefits of restoring and preserving the Public Land Survey System are undeniable. It creates secure land records for future generations, reduces unnecessary litigation, makes future land surveys more accurate and reliable, and provides an accurate foundation for maps and geospatial data. Perhaps the most direct benefit of this process is the proven reduction in costs for land surveying services for property owners. A properly restored and preserved Public Land Survey System means that you don't need to pay a land surveyor for hours of extra labor just to perform a basic survey of your property lines.

You can learn more about the benefits and importance of this work by visiting Minnesota's Preserving the Public Land Survey System website at <https://plss-minnesota.hub.arcgis.com>.

~Submitted by: GIS Director, Kevin Trappe and County Surveyor, Bob Murray



Top view of a PLS corner monument from 1995

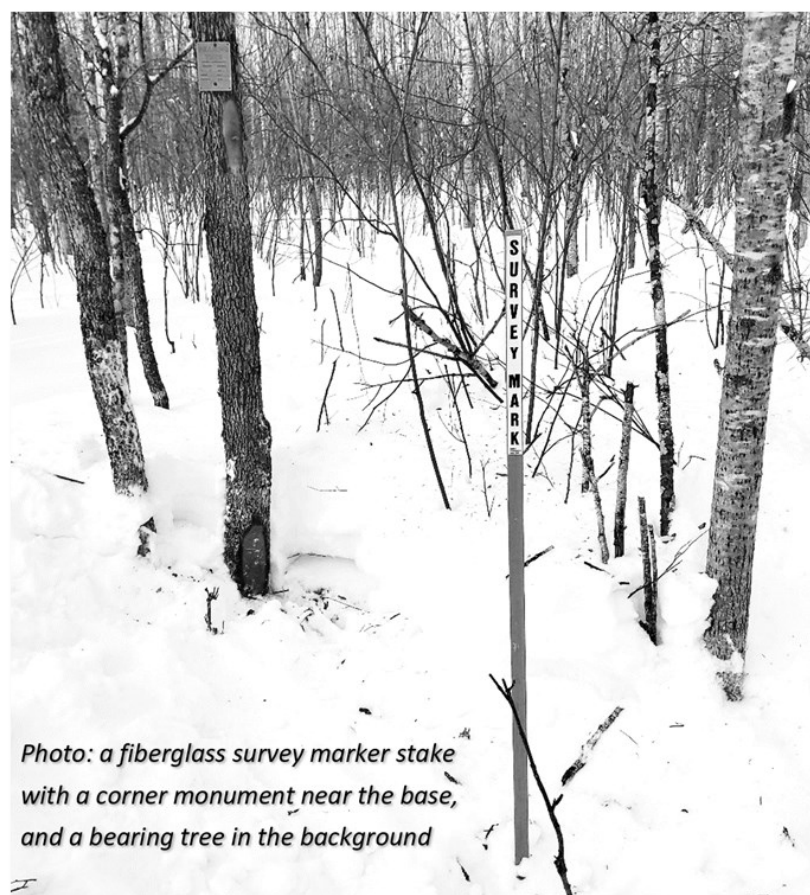


Photo: a fiberglass survey marker stake with a corner monument near the base, and a bearing tree in the background

LOOKING FOR A FULFILLING CAREER THAT'S MORE THAN JUST A JOB?



Beltrami County offers a variety of employment opportunities across different departments. We invite you to explore our current job openings to see where you can make a difference in our community!

CONNECT WITH US TODAY!

hr@co.beltrami.mn.us

co.beltrami.mn.us

WHAT WE OFFER:

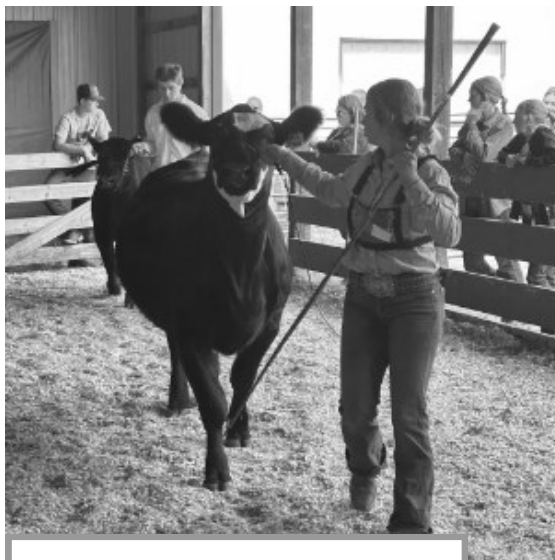
- » **Competitive Pay**
Annual wage and cost of living increases
- » **Comprehensive Benefits**
Monthly flex dollars for benefits including medical, dental, vision and life insurance
- » **Generous Paid Time Off**
PTO accrual starts at 21 days per year plus 11 paid holidays
- » **Pension and Retirement Plans**

4-H Youth “Learn by Doing” through County and State Showcases

Beltrami County 4-H has recently wrapped up a series of showcases held during the Beltrami County Fair. More than 2,100 entries were entered by 218 youth and 7 community 4-H clubs. The opportunity to showcase exhibits provides youth the opportunity to discuss their learning experience and hear feedback about their work with a volunteer project judge. Youth are able to apply the feedback while exploring the project area the following year. This process is integral to the 4-H youth development philosophy, “Learn by doing.”

The next step for many youth after the county showcase is advancing to the Minnesota State Fair, showcasing their exhibits in the barns or exhibit hall during the “Great Minnesota Get-together.” 64 Beltrami County 4-H’ers will be exhibiting their animals or exhibits this year and will be judged alongside the best of what Minnesota 4-H has to offer. We congratulate all of our youth exhibitors on your accomplishments!

Are you interested in learning more about what 4-H can offer your family? Enrollment begins September 15th! Contact the Beltrami County Extension office to get more information about local clubs and program opportunities including shooting sports, dog training, horse showing, and more! We can be reached at 218-444-5722 or mnext-beltrami@umn.edu.



Rilee N.—Beef Project



www.co.beltrami.mn.us

Board of Commissioners

- District 1—Craig Gaasvig218-766-9699
- District 2—Joe Gould218-259-4342
- District 3—Richard Anderson218-467-3275
- District 4—Tim Sumner218-407-7589
- District 5—John Carlson218-766-5010

Administration Building

701 Minnesota Ave NW, Bemidji MN 56601

- Administrator—Thomas Barry 218- 333-4109
- Assessor—Kaleb Bessler218-333-4116
- Auditor/Treasurer—JoDee Treat.....218-333-4175
- Environmental Services—Brent Rud218-333-4158
- Facilities Manager—Steve Shadrick218-333-8475
- Geographic Info Systems (GIS).Kevin T. 218-333-8457
- Human Resources—Ann Schroeder218-333-4155
- License Center218-333-4148
- Mgmt Info Systems (MIS)—Kevin W. ... 218-333-4151
- Natural Resource Mgmt—Shane Foley .218-333-4210
- Real Estate & Tax Services.....218-333-4138
- Recorder—Charlene Sturk.....218-333-4170

Community Service Center

616 America Ave NW, Bemidji MN 56601

Health & Human Services

- Director Anne Lindseth218-333-4195
- Social Services - Director Jeff Lind218-333-4196
- Economic Assistance Division
- Director—Curt Anderson.....218-333-4199
- Public Health - Director Amy Bowles.... 218-333-8116
- Veterans Services Shane Gustafson 218-333-4192

Law Enforcement Center

613 Minnesota Ave NW, Bemidji MN 56601

- Sheriff Jason Riggs218-333-9111
- Bemidji Police Chief Mike Mastin.....218-333-9111

Judicial Center

600 Minnesota Ave NW, Bemidji MN 56601

- Attorney—David Hanson.....218-333-4219
- Court Administration218-888-5060

County Jail

626 Minnesota Ave NW, Bemidji MN 56601

Main phone number.....218-333-4189

Public Works Department

2491 Adams Ave NW, Bemidji MN 56601

Highway Engineer—Bruce Hasbargen...218-333-8173

751 Industrial Park Dr SE

Solid Waste Director—Brian Olson218-333-8187

County Extension

7223 Fairgrounds Rd NW, Bemidji MN 56601

Extension Secretary218-444-5722

Beltrami Community Health Board



<https://www.surveymonkey.com/r/Beltrami2024CHA>



COMMUNITY HEALTH ASSESSMENT

YOUR VOICE AND INFORMATION MATTERS

Please complete the Beltrami County Community Health Assessment Survey and return it by mail, in person or email:

Beltrami County Public Health
616 America Ave NW, Suite 130
Bemidji, MN 56601
public.health@co.beltrami.mn.us