



**Beltrami County NRM  
Timber Appraisal**

**2240  
25**

<b>Appraised By:</b> Marshall Graham	<b>Sale Type:</b> REGULAR AUCTION SALE	<b>Appraisal Number:</b> Old Silver Aspen	<b>Page:</b> 2 of 3
<b>Appraisal Date:</b> 05/07/2024	<b>Auction Date:</b> 08/08/2024	<b>Permit Number:</b> 224025	
	<b>Access:</b> Public Access	<b>Expiration Date:</b> 08/08/2026	

**Landings, Access Roads, and Skid Trails**

- Landings Approved – Landing locations must be approved in advance by the Forester. Sale plan includes 3 landings
- Road Closure slash - New temporary roads and existing trails planned for closure shall have sufficient slash scattered and trampled on the surface to render the route impassable to motor vehicles. Close all trails going east to the aspen and red pine block #66 off main road.

**Site, Soil, and Water Protection**

- RMZ General - Wetland and lowland brush areas are either excluded from the harvest block or protected by ERZ within block. Be sure to minimize scarification in filter strip per BMP guidelines.

**Slash Disposal**

- Slash mostly on trails in the red pine stands – Slash placement shall be mostly on the trails well trampled, and below 24” elsewhere.
- Slash Scattered - in the aspen stand.

**Tree Size, Marketing, and Special Conditions**

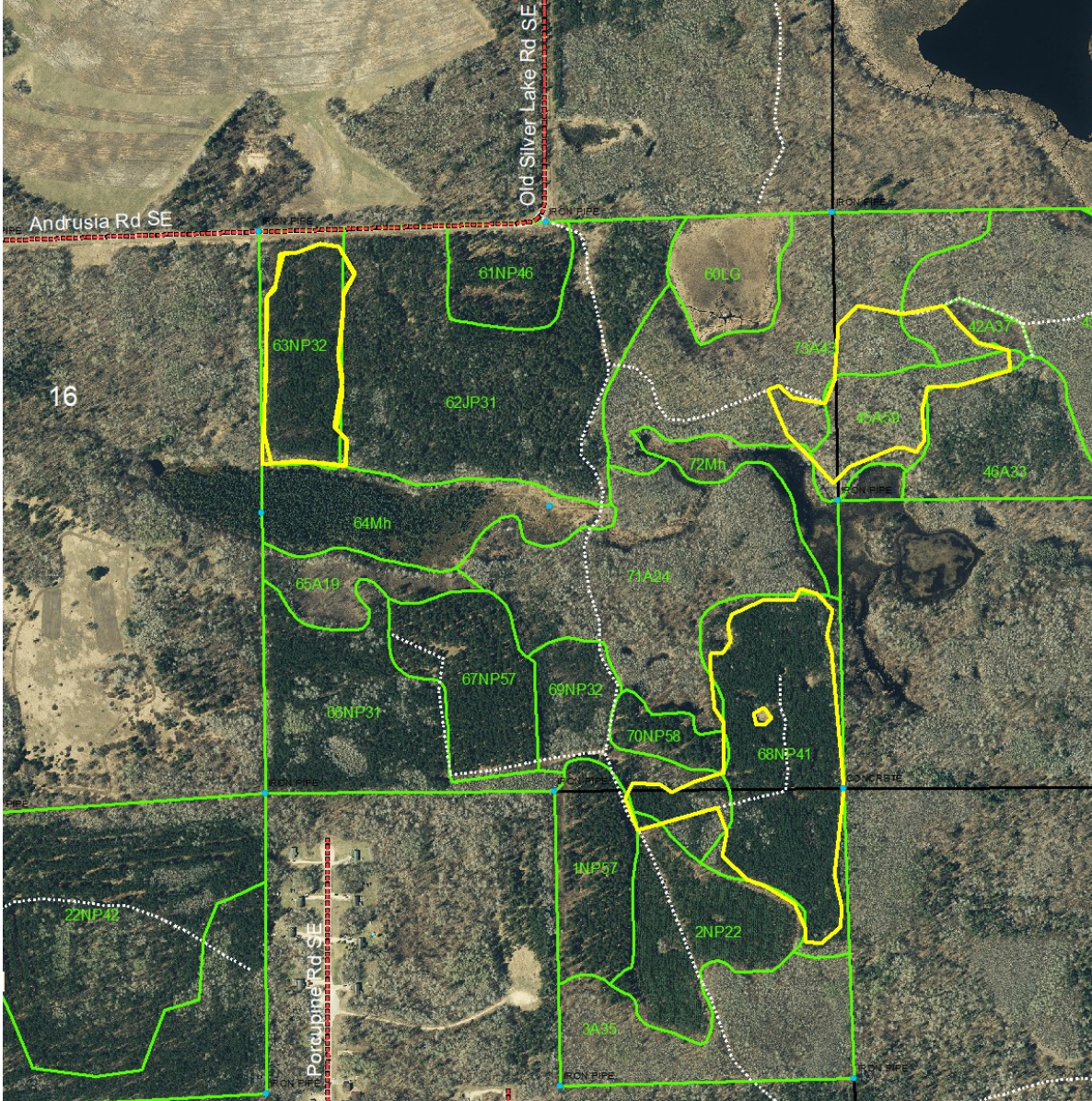
- 4 inch TDIB – Utilize all material from butt to a 4” top diameter inside bark.
- Pine thinning guides - to minimize Ips Bark Beetle Damage in residual or nearby pine. A) December 1–May 31: All cut pine material > 3” and pine logs must be removed or destroyed before June 1 ; B) June 1–August 31: All cut pine material > 3” and pine logs must be or destroyed within 3 weeks of cutting; C) September 1–November 30: may leave slash on site

# Beltrami County NRM Timber Appraisal

# 2240 25

<b>Appraised By:</b> Marshall Graham	<b>Sale Type:</b> REGULAR AUCTION SALE	<b>Appraisal Number:</b> Old Silver Aspen	<b>Page:</b> 3 of 3
<b>Appraisal Date:</b> 05/07/2024	<b>Auction Date:</b> 08/08/2024	<b>Permit Number:</b> 224025	
	<b>Access:</b> Public Access	<b>Expiration Date:</b> 08/08/2026	

### Site Map:



Appraisal examined and approved by \_\_\_\_\_  
Forester Date

Appraisal examined and approved by \_\_\_\_\_  
Land Department Date